



PC Maintenance Tweaks

- Clear Temp Files Weekly
- Check Windows Logs Weekly
- Make sure boot drive no more than 50% full
- Run sfc /scannow if problems suspected

Optimize your Trading Environment

- Make Sure Firewall & Antivirus OFF
- Check ping response and Internet speed
- Make sure system time current
- Make sure instrument list current
- Rename NinjaTrader .sdf file if it gets too large
- Archive unused templates
- Check NinjaTrader log for errors
- Backup or Replicate Boot Drive & NT Application
- NT Version? Keep current on updates
- Delete old replay data
- Use UPS Backup and run Ethernet through filter
- Cat 7 Shielded Patch Cables
- Trade on wired not wireless connection
- Beware of third party indicator imports

Trading Tips

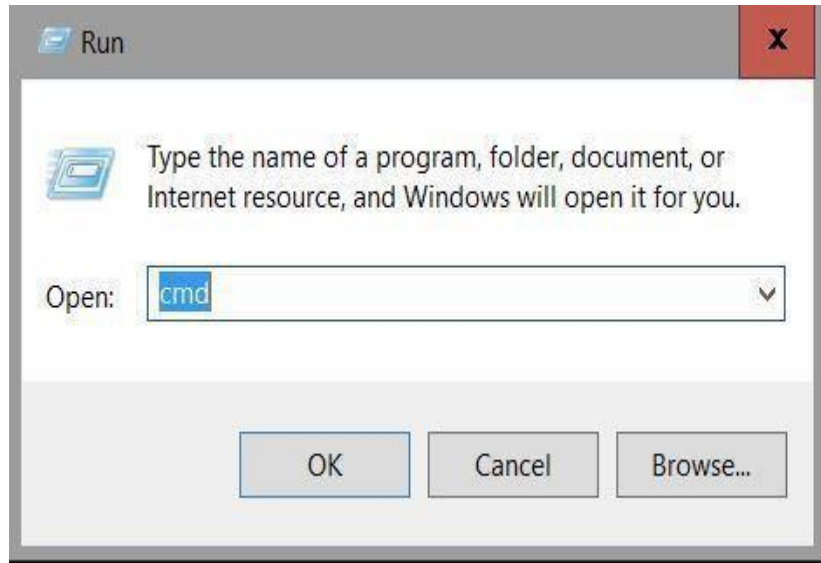
- Learn to be PREDICTIVE
- Attractor Factor of 200 / PP / Previous day H/L
- What you do on SIM you WILL do live
- One live trade a week or month
- Optimize your money management
- Document your trading results for review
- Choose to be an expert on the instrument you trade
- Cultivate CONSCIOUS AWARENESS of what you do!!

Trade-#	Instrument	Quantity	Entry price	Exit price	Entry time	Exit time	Profit	Cum. profit	MAE
1	CL 06-17	1	47.93	47.95	5/3/2017 8:23 AM	5/3/2017 8:28 AM	20	20	40
2	CL 06-17	1	47.83	47.86	5/3/2017 8:59 AM	5/3/2017 9:04 AM	30	50	70
3	CL 06-17	1	47.78	47.75	5/3/2017 9:14 AM	5/3/2017 9:18 AM	30	80	50
4	CL 06-17	1	47.74	47.77	5/3/2017 9:20 AM	5/3/2017 9:25 AM	30	110	30
5	CL 06-17	1	47.95	47.97	5/3/2017 10:14 AM	5/3/2017 10:20 AM	20	130	60





The “*netstat*” command displays active TCP connections when you use the command without parameters. The -ano parameter lets you audit and troubleshoot ports being used. When you use the *netstat* command together with the -ano parameter, the command displays the PID [Process ID] that is associated with each connection. You can map ports to PIDs by typing “cmd” into the “run” box and then *netstat -ano* at the command line and “enter.”



```
ca. C:\WINDOWS\system32\cmd.exe
Microsoft Windows [Version 10.0.10586]
(c) 2015 Microsoft Corporation. All rights reserved.

C:\Users\Sheryl>netstat -ano

Active Connections

Proto Local Address           Foreign Address         State           PID
TCP   0.0.0.0:80                0.0.0.0:0               LISTENING      4
TCP   0.0.0.0:135               0.0.0.0:0               LISTENING      976
TCP   0.0.0.0:445               0.0.0.0:0               LISTENING      4
TCP   0.0.0.0:1801              0.0.0.0:0               LISTENING      2664
TCP   0.0.0.0:2103              0.0.0.0:0               LISTENING      2664
TCP   0.0.0.0:2105              0.0.0.0:0               LISTENING      2664
TCP   0.0.0.0:2107              0.0.0.0:0               LISTENING      2664
TCP   0.0.0.0:2869              0.0.0.0:0               LISTENING      4
TCP   0.0.0.0:5357              0.0.0.0:0               LISTENING      4
TCP   0.0.0.0:47989             0.0.0.0:0               LISTENING      156
TCP   0.0.0.0:49664             0.0.0.0:0               LISTENING      684
```



Next, open task manager using **CTRL-ALT-DEL**.

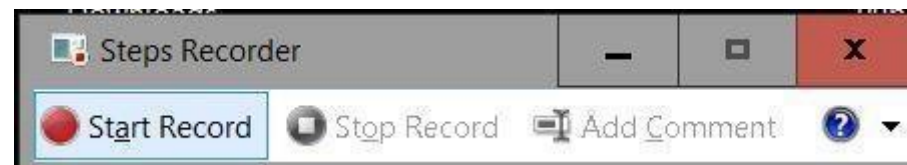
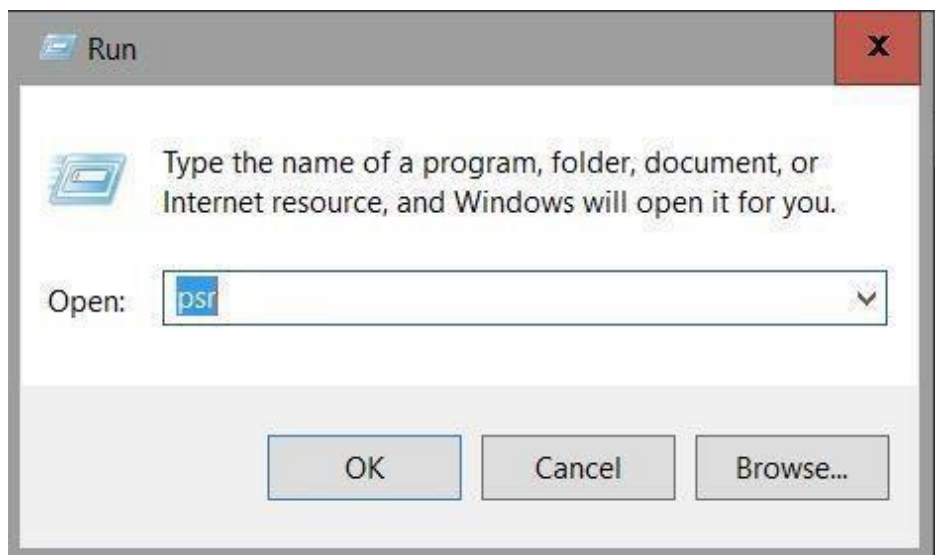
Click on the "Description" tab to identify the process or **PID**

Name	PID	Status	User na...	CPU	Memory ...	Description
System interrupts	-	Running	SYSTEM	02	0 K	Deferred procedure calls and
System Idle Process	0	Running	SYSTEM	95	4 K	Percentage of time the proces
System and compressed memory	4	Running	SYSTEM	00	6,172 K	NT Kernel & System
svchost.exe	8	Running	SYSTEM	00	78,460 K	Host Process for Windows Ser
nvstreamsvc.exe	156	Running	SYSTEM	00	6,372 K	NVIDIA Streamer Service
SnippingTool.exe	212	Running	Sheryl	00	2,496 K	Snipping Tool
smss.exe	420	Running	SYSTEM	00	240 K	Windows Session Manager
dwm.exe	456	Running	DWM-1	00	57,808 K	Desktop Window Manager
csrss.exe	584	Running	SYSTEM	00	792 K	Client Server Runtime Process



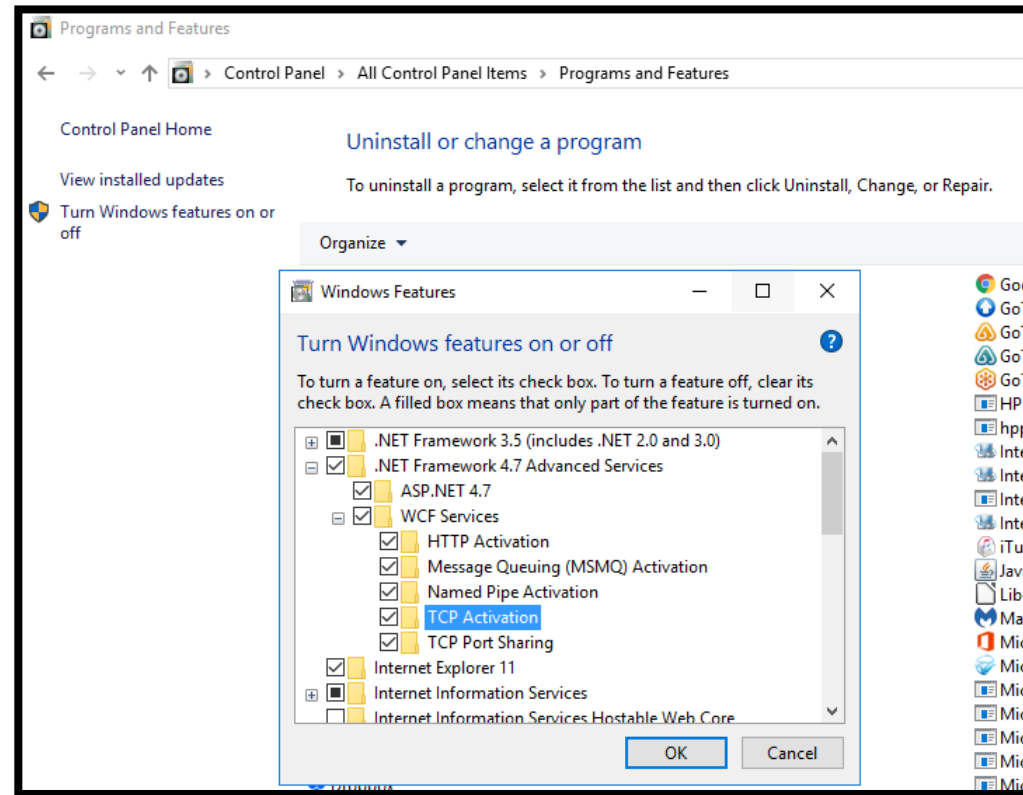
NEXT TIP:

Need to make a quick screencast? The “**Problem Steps Recorder**” can create an MHTML file that shows steps by creating a screen capture each time you take an action. Click the Start button, open the “run” box and type ‘psr’ to open the **Problem Steps Recorder**.



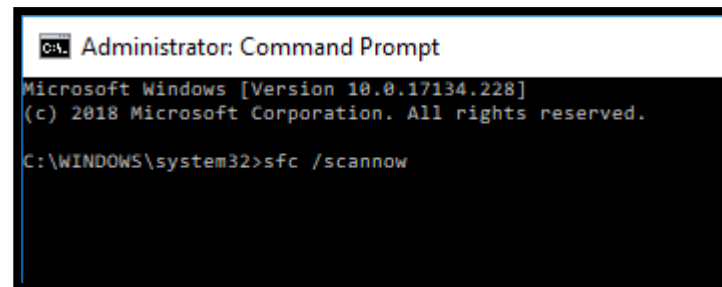
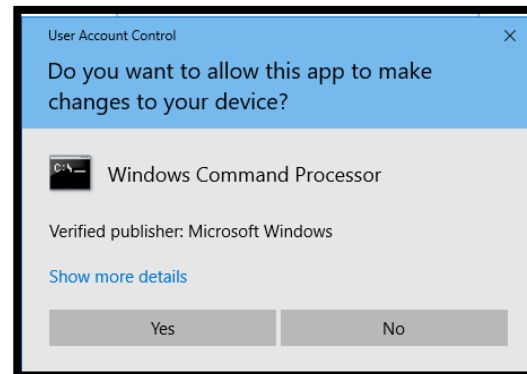


For the **NinjaTrader8** platform, the .NET settings are critical. Navigate to “Control Panel.” Open “Programs and Features.” Next click on “Turn Windows Features on or off.” Make sure all boxes UNDER **.NET Framework 4.7 Advanced Services** are “CHECKED.”





Activate the **Windows Power Shell Command Line Run Box with Administrative Privileges** by doing the following - Press the “Windows” key with the “X” key. A box will come up that gives you the choice to open a Command Prompt with Admin privileges. Type in **“sfc /scannow”** and then hit enter. It will take anywhere from ten to thirty minutes to run. Any corrupt system files will be repaired.

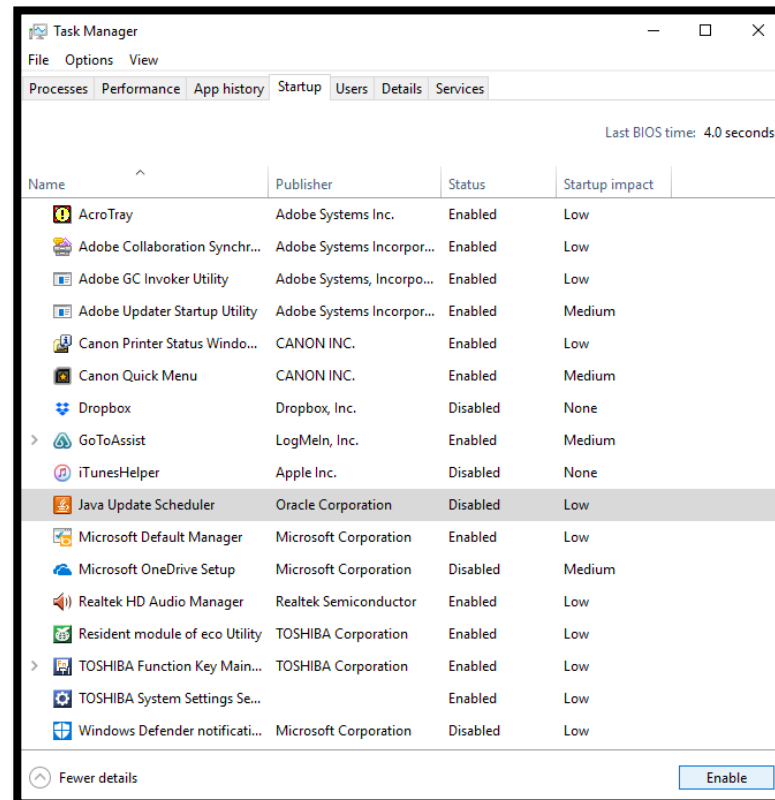




Open task manager using **CTRL-ALT-DEL**.

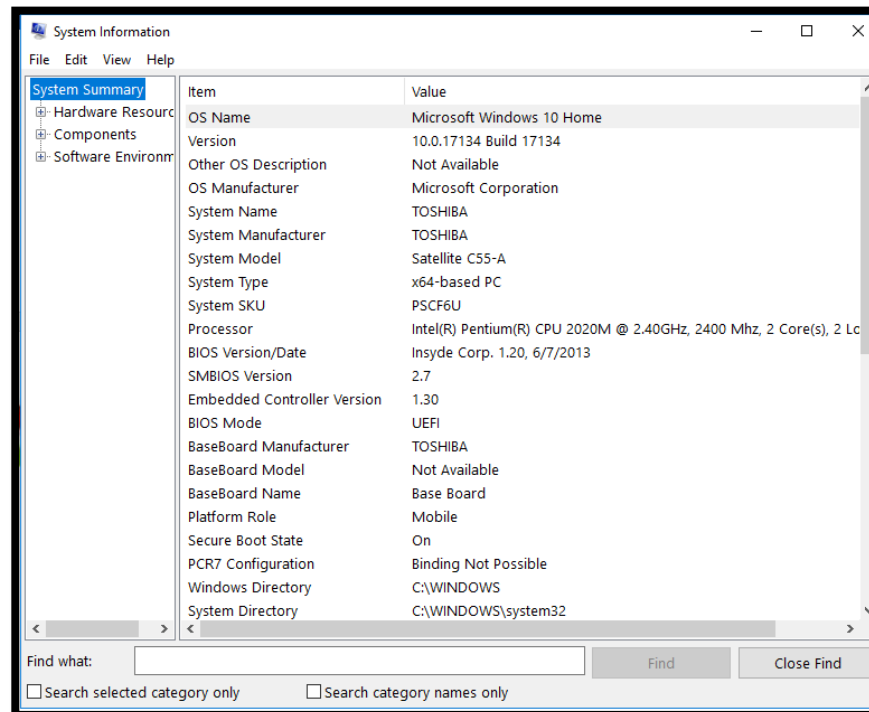
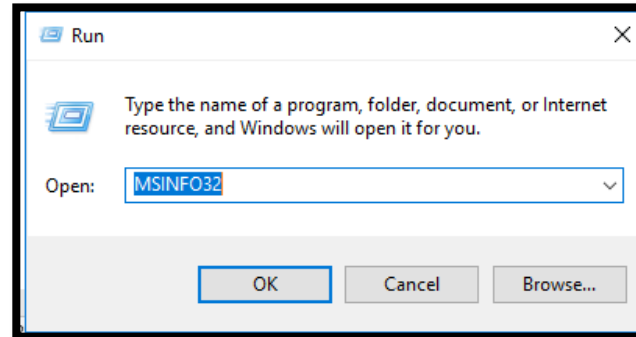
Click on the "Startup" tab to identify programs starting and running in the background.

Disable any that are not necessary to improve the performance of your hardware.





Right click Windows key and choose “Run.” Type **“MSINFO32”** and choose “OK.”





Right click Windows key and choose “Run.” Type “%temp%” and choose “OK.” Highlight and delete all files in the temp folder. Files in use by the system will NOT be able to be deleted.

