



## 1 Minute MLT

This template contains all the 1min MLT indicators; SMA, MLTPL, MLTEMA, MLTRM, MLTPivots, MLTSwingbody.



## 1 Minute Default

This is a blank template with candlesticks defaulted with the correct properties and ready for adding MLT 1min indicators.



## VScalp & VScalp Trigger

These templates contain the following indicators; MLTRM, MLTPivots, MLTSwingBody, MLTPL, MLTSlopes. **Other indicators may be added, for example MACD or Stochastic.**

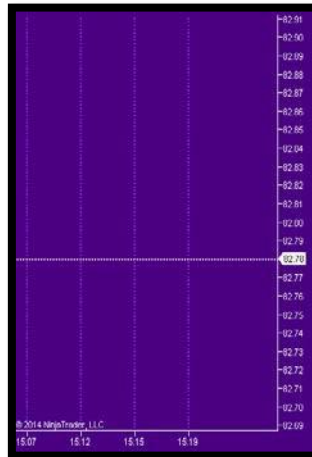


Please note that MasterBar templates we consider not currently viable for trading due to current market conditions will have their names and descriptions highlighted yellow but are still often currently used by advanced MLT Traders for additional confirmation of strategic setups.



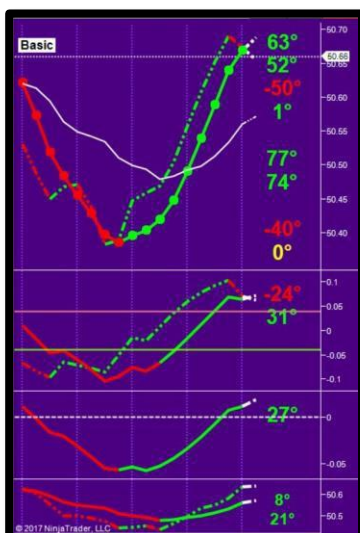
## 34MB Default

This is a blank template defaulted with the correct properties and ready for adding 34MB indicators.



## 34MB Basic

This template contains all 34MB indicators; STML, LTML, SL, TL, MLP, STMTL & LTMTL. These indicators create all Masterlines and slopes.



## 34MB Basic MA

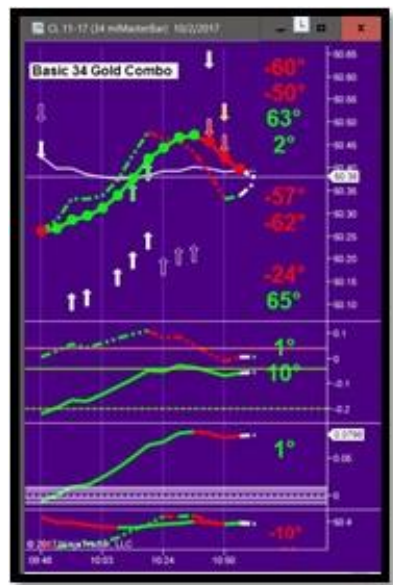
This template contains the same information as the 34MB Basic template. In addition, it has the 8EMA, 13SMA, 21SMA and their corresponding slopes in Panel two.





## Basic 34 Gold Combo

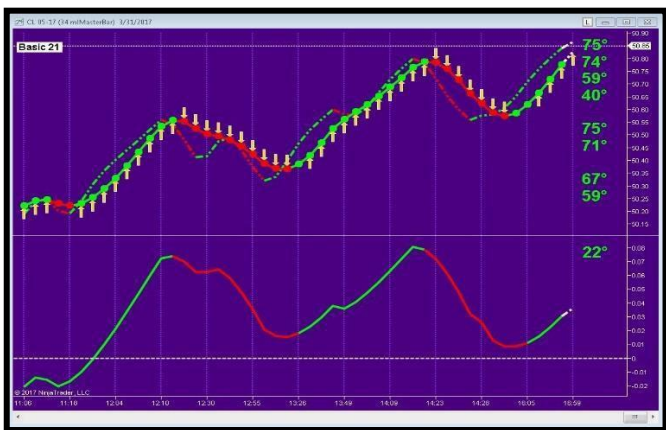
- This template contains the following arrows:
- Red/Green: Plots when 21 MB LTML/STML and 34 MB LTML/STML are in sync.
  - Gold: Plots when 34MB LTML and MLP line color are in sync.
  - White: Plots when distance requirements are met for all 5 Bucket 1 Barriers (13 EMA, 200 SMA, Swing Bodies, Previous Day Settlement & MLP Zero Line)
  - Indigo: Plots when STMTL & LTMTL are in sync with LTML
  - Orange: Plots when Mega Momentum is met (Triple, Tag Trade & Radius)



## Basic 21

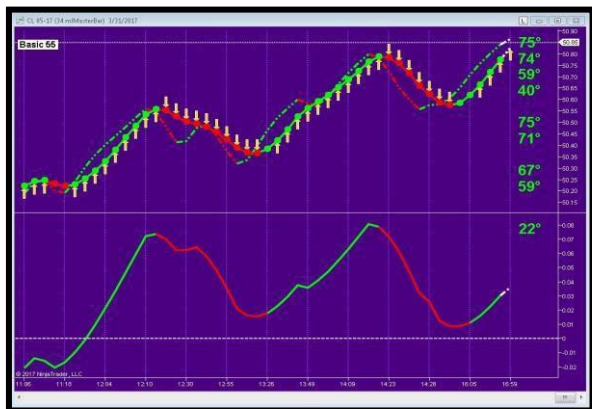
The Gold Arrow plots when 21MB LTML and MLP line color are in sync.

**Be sure to select the appropriate DATA SERIES when creating a 21MB or 55MB Chart.**



## Basic 55

The Gold Arrow plots when 55MB LTML and MLP line color are in sync.





## 34MB Momentum

This template contains the following Arrows:

- Range Marker
- Scalp
- Double Momentum
- Triple Momentum Radius
- Momentum Secret
- Weapon Reversal Cross
- Trade/Gap

They identify opportunities for both trend and countertrend trades relative to the price of the 13 EMA from a 1min chart.



## 34MB Trend

This template contains the following Arrows:

- Range Marker
- Scalp
- Double Momentum
- Triple Momentum Radius
- Momentum Secret
- Weapon Reversal Cross
- Trade/Gap

They identify opportunities for trend trades only relative to the price of the 13 EMA from a 1min chart.

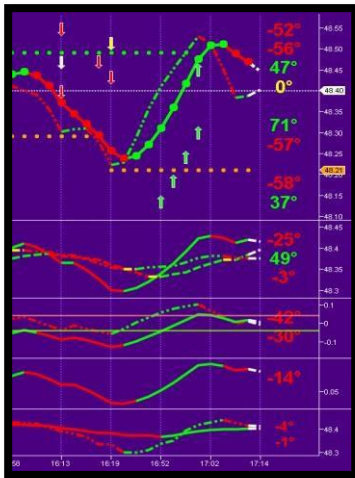


**Successful traders do not trade arrows. Rather they use arrows as an aid to awareness of current market conditions. Be sure to always observe the sync between MasterBar and 1 Minute Chart signals.**



## 34MB ST

This template contains arrows for the Slope trade with minimum filters set. Also, the 8EMA, 13SMA, 21SMA and their corresponding slopes are displayed in Panel two.

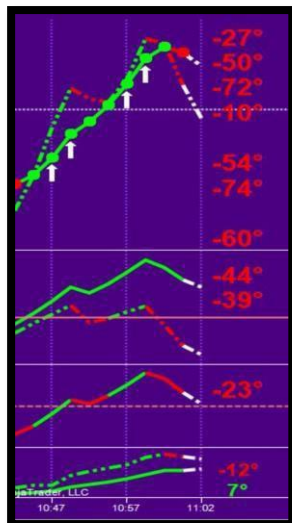


## 34MB DS

This template contains an arrow for the Double Slope trade with minimum filters set.



## 34MB WL

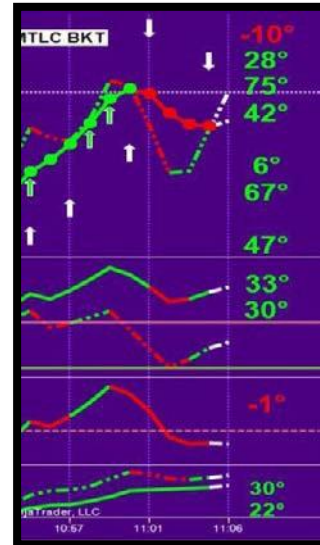


When all seven Masterlines and all slopes are the same color the arrow prints.



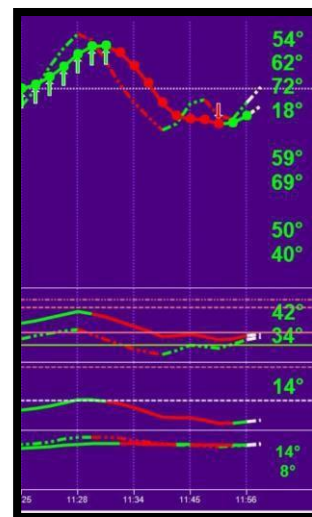
## 34MB MLP LTML

This template contains a red/green strategic arrow for the MLP LTML Trade as well as a white confirmation arrow for the 5 "Bucket One Barriers" with minimum filters set. This is a W1, B1 Trade.



## 34MB MLP MTLC

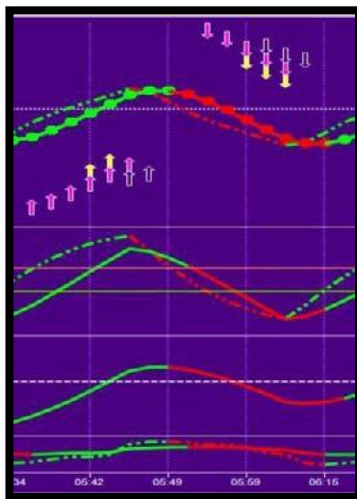
This template contains a red/green strategic arrow for the MLP MTLC Trade as well as a white confirmation arrow for the 5 "Bucket One Barriers" with minimum filters set. The second red/green arrow is a confirmation arrow showing when minimum range conditions have been met with respect to Range Markers and Swing Bodies.





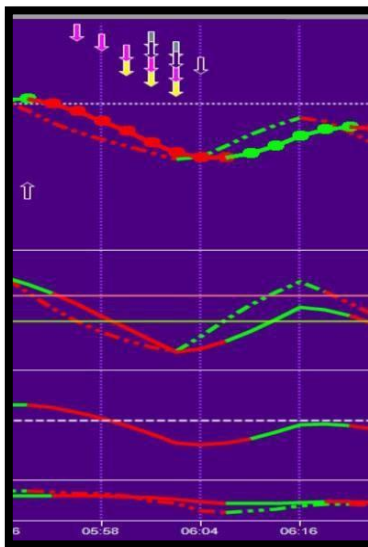
## 34MB VScalp

This was the original 34MB Chart used to “Handshake” with the 1-minute VScalp Chart. Yellow Radius Momentum, Fuchsia SWR, and Indigo LTMTL Cross arrows.



## 34MB VScalp Blue

Yellow Radius Momentum arrow parameters combined with Indigo LTMTL Cross arrow parameters to create a single signal arrow colored BLUE for use with Strategy Tool.



## 34MB MTLC Combo Blue

This is the 34MB MLP MTLC template modified for use as HANDSHAKE for VScalp trading by ADDING the VScalp BLUE arrow which is the combination of Yellow Radius Momentum and Indigo LTMTL Cross arrow parameters.





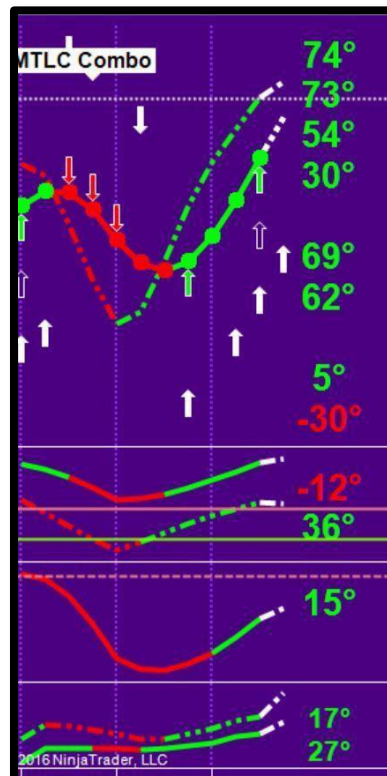
## 34MB MLP Sync

This template contains two arrows. The red/green prints when the LTML and MLP are in sync and minimum range size is met with respect to Range Markers and Swing Bodies. The white arrow contains the same filter settings but only prints when the price is trending with the one minute 13 EMA



## 34MB MTL Combo

The template contains three arrows. The red/green arrow prints when minimum filter conditions are set for a trend trade with minimum range size. The Indigo arrow prints when the four conditions are met for the Master Trend lines crossing. The white arrow prints when the minimum conditions are met for the 5 Bucket One Barriers.

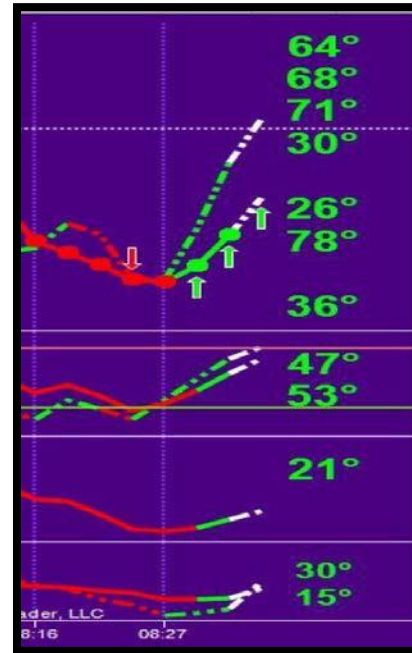






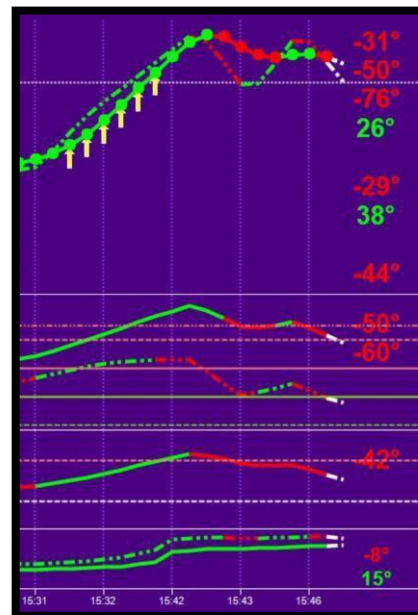
## 34MB NT

This template contains a Red/Green arrow for trend trades and a White arrow for countertrend trades relative to the price of the 13 EMA from a 1-minute chart. It is only traded on W1B1.



## 34MB TT

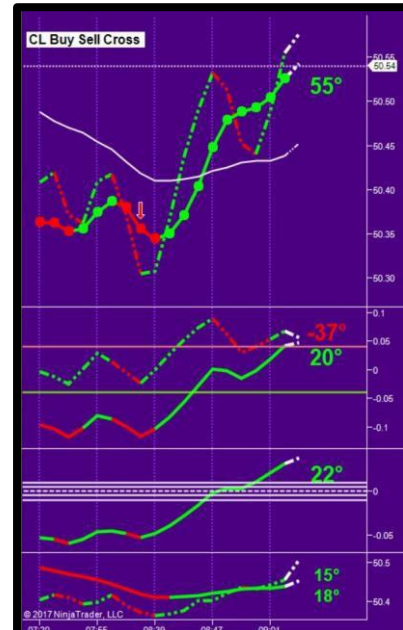
This template contains an arrow for the Tag Trade which is a combination of TL, MLP and STMTL slopes with minimum filters set.





## CL Buy Sell Cross

This template contains an arrow for the Buy Sell Cross Trade which plots when the minimum selected filters are met and the LTML is above white Buy Sell Line for long Entry and below white Buy Sell Line for short entry.



## CL Gold Combo

This template contains an arrow for the Gold Combo Trade which plots when 34MB LTML and MLP line color are in sync and has the same filter settings as the gold arrow in the Basic 34 Gold Combo Template. Note: The Chart Templates section of the members ftp site contains a separate Gold Combo Chart Template for all 18 instruments.

