

Gold Combo Strategy Settings NT8

DOCUMENTATION

Gold Combo Strategy

- ▶ Individual traders will need to consider their specific commissions when calculating “BREAK EVEN” after running the strategy and reviewing results
- ▶ Limit Order: -2
- ▶ Profit Target: 4
- ▶ Stop Loss: 6
- ▶ 4 Bar Wonder Rule Engaged
- ▶ Time Filters: **Monday, Tuesday, Thursday, Friday** 70000-85500, 90200-92500, 93200-14300 / **Wednesday** 70000-85500, 90200-92500, 93200-101500, 104000-143000
- ▶ Create a unique Gold Combo Strategy template for each instrument you trade and make sure the settlement data is current each time you use one of these iterations for trading.
- ▶ Think about enhancing your results by using an ATM Stop Strategy with a Trailing Stop Feature enabled. Check out the [VIDEO!](#)
- ▶ Schedule a “One-on-One session with Ken or Sheryl if you need coaching or some “hands on” setup support!



▼ Arrow Alerts	
Arrows Enabled	<input checked="" type="checkbox"/>
Up Arrow Color	 Gold
Down Arrow Color	 Gold
Arrow Tick Displacement	1
WAV - Up Arrow	<input type="checkbox"/>
WAV - Down Arrow	<input type="checkbox"/>
▼ Arrow Filters - Box Exclusion	
Use TL Box?	<input checked="" type="checkbox"/>
▼ Arrow Filters - EMA Relation	
Period	13
Use Min Dist Retrace?	<input checked="" type="checkbox"/>
Min Dist Retrace	1
Use Min Dist Trend?	<input checked="" type="checkbox"/>
Min Dist Trend	1
Use Min Slope?	<input type="checkbox"/>
Min Slope	20
▼ Arrow Filters - Line Sync	
MLP Color	<input checked="" type="checkbox"/>
SL Color	<input type="checkbox"/>
TL Color	<input type="checkbox"/>
▼ Arrow Filters - LTMTL/STMTL Cross	
Use Cross?	<input type="checkbox"/>
Min Distance	0
Use Cross Lookback?	<input type="checkbox"/>
Cross LB	0
▼ Arrow Filters - MLP Zero Line Relation	
Use Min Dist Retrace?	<input checked="" type="checkbox"/>
Min Dist Retrace	0.01
Use Min Dist Trend?	<input checked="" type="checkbox"/>
Min Dist Trend	0.01

Make sure proper settings for the instrument you trade

▼ Arrow Filters - Optimum TL Position	
Use Opt TL Pos?	<input type="checkbox"/>
▼ Arrow Filters - Range Marker Relation	
Use Min Dist?	<input type="checkbox"/>
Use Inner Bands?	<input type="checkbox"/>
Min Dist	8
Use Min Range Size?	<input type="checkbox"/>
Min Range Size	8
Days Look Back	5
▼ Arrow Filters - Settlement Relation	
Settlement Price	0
Use Min Dist Retrace?	<input checked="" type="checkbox"/>
Min Dist Retrace	1
Use Min Dist Trend?	<input checked="" type="checkbox"/>
Min Dist Trend	1
▼ Arrow Filters - Slope	
Previous LTML Slope Filter?	<input type="checkbox"/>
Previous LTML Slope Value Alert	5
LTML Slope Filter?	<input checked="" type="checkbox"/>
LTML Slope Value Alert	5
LTML Double Slope Filter?	<input type="checkbox"/>
LTML Double Slope Value Alert	60
LTMTL Slope Filter?	<input type="checkbox"/>
LTMTL Slope Value Alert	20
MLP Slope Filter?	<input checked="" type="checkbox"/>
MLP Slope Value Alert	10
SL Slope Filter?	<input type="checkbox"/>
SL Slope Value Alert	5
STML Slope Filter?	<input checked="" type="checkbox"/>
STML Slope Value Alert	5
STMTL Slope Filter?	<input type="checkbox"/>
STMTL Slope Value Alert	20
TL Slope Filter?	<input type="checkbox"/>
TL Slope Value Alert	5

Make sure correct settlement data entered



▼ **Arrow Filters - Slope MBF 1**

Use MBF Slope Filter?

MBF Period 55

LTML MBF Slope Value Alert 5

STML MBF Slope Value Alert 5

MLP Color?

MLP Slope Filter?

MLP Slope Value Alert 15

▼ **Arrow Filters - Slope MBF 2**

Use MBF Slope Filter?

MBF Period 21

LTML MBF Slope Value Alert 25

STML MBF Slope Value Alert 25

MLP Color?

MLP Slope Filter?

MLP Slope Value Alert 15

▼ **Arrow Filters - Slope Triple...**

Use Triple MA Slope Filter?

Triple Slope Value Alert 5

▼ **Arrow Filters - SMA Relation**

Period 200

Use Min Dist Retrace?

Min Dist Retrace 1

Use Min Dist Trend?

Min Dist Trend 1

▼ **Arrow Filters - STML Cross**

Use STML/LTML Cross Filter?

Cross Count 2

Min Distance 0

▼ **Arrow Filters - Swing Body**

Use Min Dist Retrace?

Min Dist Retrace 1

Use Min Dist Trend?

Min Dist Trend 1

Swing Invalidate Ticks 1

Swings Strength 5

Swings To Store 50

Use Min Range Size?

Min Range Size 8

▼ **Arrow Filters - SWR**

Use SWR Filter?

Use TL Box?

▼ **Arrow Filters - TL OB or OS**

TL OB/OS

▼ **Arrow Filters - Wave Alert**

Wave

▼ **Color LTML**

Long Color Lime

Neutral Color Yellow

Short Color Red

▼ **Saving Strategy Template**

Save Template?

Template Name CL Gold Arrow

Be sure you save your template with the appropriate instrument name based on the Zero Line Box Settings you used as well as the Settlement Data you used. You can create Gold Arrow Templates for any or all instruments you are licensed to trade.



▼ Slope Display

Slope Font Size: 30

LTML Slope Location COBC...: 1

LTML Slope Location COBC...: 0

EMA Slope Location: 3

EMA Show Slope?:

LTML Show Slope COBC = ...:

LTML Show Slope COBC = T...:

LTML Slope COBC?:

Slope Down Color: █ Red

Slope Up Color: █ Lime

Slope Neutral Color: █ Yellow

LTML MBF Slope Location 1: 5

LTML MBF Show Slope 1?:

STML MBF Slope Location 1: 6

STML MBF Show Slope 1?:

LTML MBF Slope Location 2: 8

LTML MBF Show Slope 2?:

STML MBF Slope Location 2: 9

STML MBF Show Slope 2?:

▼ TextDisplay

Show Text?:

Text: CL Gold Combo

Font Size: 10

Text Color: Black

BG Color: White

Opacity: 80

▼ Data Series

Input series: CL 02-19 (34 mlMasterBar)

▼ Set up

Calculate: On price change

Label: mlLTML

Maximum bars look back: Infinite

▼ Visual

Auto scale:

Displacement: 0

Display in Data Box:

Panel: 1

Price marker(s):

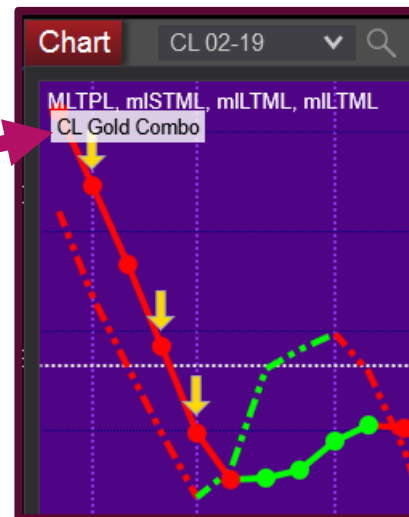
Scale justification: Right

Visible:

▼ Plots

- ▶ LTML: Line, Solid, 4px
- ▶ LTML - RT: Line, Dash Dot Dot, 4px

Calculate can also be set for "On Bar Close" or "On Each Tick"



Modify the Chart Name on Each Template You Create For Each Instrument You Trade.



Strategies

Available *i*

- MLT
- Sample ATM strategy
- Sample MA crossover
- Sample multi-instrument
- Sample multi-timeframe

Configured

- MLT

Properties

▼ Order Inputs

- Use Bar Close Entry?
- Use ATM Template?
- ATM Template name
- Order Quantity 1
- Use Cancel Unfilled Or...
- Use Limit Entry?
- Limit Offset? 0
- Profit Target 10
- Stop Loss 10
- Use Halt Trading Profit?
- Halt Trading Profit 50
- Use Halt Trading Loss?
- Halt Trading Loss 50
- One Trade Per Bar?
- Ignore if not X Different... 4
- Use Time Filter1
- StartTime1 0
- EndTime1 0
- Use Time Filter2
- StartTime2 0
- EndTime2 0

Basic "RECIPE" for Gold Combo Strategy Settings Here

4 Bar Lookback

Time Filters Go Here



Foundation Strategy Settings go HERE. Template Name / Waves to Trade / Bars to Trade

Strategy	Instrument	Data series	Parameter	Position	Acct. positi	Sync	Avg. price	Unrealized	Realized	Account dis	Cor	Enabled
MLT	CL 02-19	34 mlMaste	True////////Tr	-	-	True	0	\$0.00	\$0.00	Sim101	My	<input checked="" type="checkbox"/>

▼ Strategy Template

Template 1 Waves to Trade 1,3,5 Bars to Trade 1,2,3 Ignore Bars/Waves STML C...

Template 2 Waves to Trade 1,3,5 Bars to Trade 1,2,3 Ignore Bars/Waves STML C...

Template 3 Waves to Trade 1,3,5 Bars to Trade 1,2,3 Ignore Bars/Waves STML C...

Template 4 Waves to Trade 1,3,5 Bars to Trade 1,2,3 Ignore Bars/Waves STML C...

Template 5 Waves to Trade 1,3,5 Bars to Trade 1,2,3 Ignore Bars/Waves STML C...

Template 6 Waves to Trade 1,3,5 Bars to Trade 1,2,3 Ignore Bars/Waves STML C...

▼ Waves/Bars

Show Waves/Bars?

▼ Data Series

Input series CL 02-19 (34 mlMasterBar) ▼

▼ Set up

Account Sim101 ▼

Calculate On price change ▼

Label MLT

Maximum bars look back Infinite ▼

Bars required to trade 20

Start behavior Wait until flat ▼

Enabled

▼ Historical fill processing

Order fill resolution Standard (Fastest) ▼

Fill limit orders on touch

Slippage 0

▼ Order handling

Exit on session close

Stop & target submission Per entry execution ▼

▼ Order properties

Time in force GTC ▼

Create Account for the instrument You are Trading.

Be sure you know how many BARS have to CLOSE before the Strategy Tool triggers a TRADE. You can change this to a smaller number.

Start behavior for the tool can be set to "Immediately Submit" if you choose.

Be sure to do your initial "ENABLE" of a Strategy by checking this box. Use the NinjaTrader Control Panel to disable and enable thereafter.



Disclaimer

Risk Disclosure:

Futures and Forex trading contains substantial risk and is not for every investor. An investor could potentially lose all or more than the initial investment. Risk capital is money that can be lost without jeopardizing ones' financial security or life style. Only risk capital should be used for trading and only those with sufficient risk capital should consider trading. Past performance is not necessarily indicative of future results.

Hypothetical Performance Disclosure:

Hypothetical performance results have many inherent limitations, some of which are described below. No representation is being made that any account will, or is likely to, achieve profits or losses similar to those shown; in fact, there are frequently sharp differences between hypothetical performance results and the actual results subsequently achieved by any particular trading program. One of the limitations of hypothetical performance results is that they are generally prepared with the benefit of hindsight. In addition, hypothetical trading does not involve financial risk, and no hypothetical trading record can completely account for the impact of financial risk of actual trading. For example, the ability to withstand losses or to adhere to a particular trading program in spite of trading losses are material points which can also adversely affect actual trading results. There are numerous other factors related to the markets in general or to the implementation of any specific trading program which cannot be fully accounted for in the preparation of hypothetical performance results and all which can adversely affect trading results.